

# Recommended Shockwave Cleaning and Maintenance

**Shockwave Clutch not working as well as it should?  
Here are some great tips to help you keep the JR Race Car  
quality your Shockwave clutch had when it was new.**

## Routine Cleaning:

(to be done at the beginning/end of each race day)

1. Wipe sheave of belt buildup (using carb/brake cleaner on a towel or cleaning rag)
2. Check clutch bolt
3. Check belt tension (excessive rubber can cause a change in belt tension)
4. Remember **NO** lubricants or oils of any kind are to be applied to the clutch

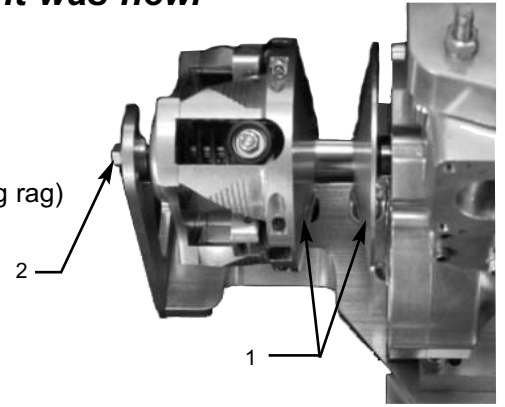


Figure 1

## Race Cleaning:

(to be done after every 4 race days)

1. Complete tear down and cleaning (take note of order the parts come off) see Figures 2 and 3
  - a. remove and check 6 bolts
  - b. remove cover and spring
  - c. using spider tool, remove spider and movable sheave (see also figure 4)
  - d. using carb/brake cleaner on a towel or cleaning rag, wipe down fixed sheave and post
  - e. clean bushing and movable sheave
  - f. clean bushing and cover
2. Re-assemble clutch

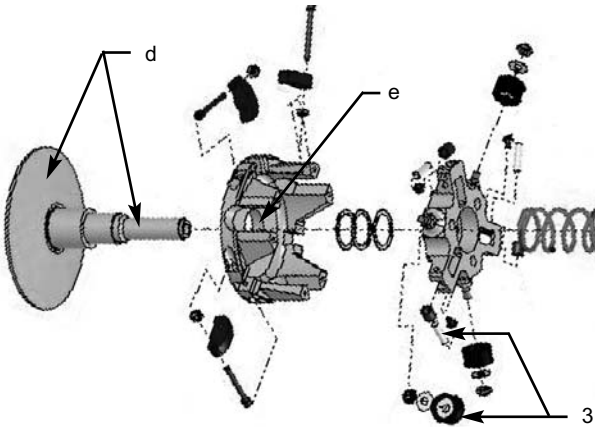


Figure 2

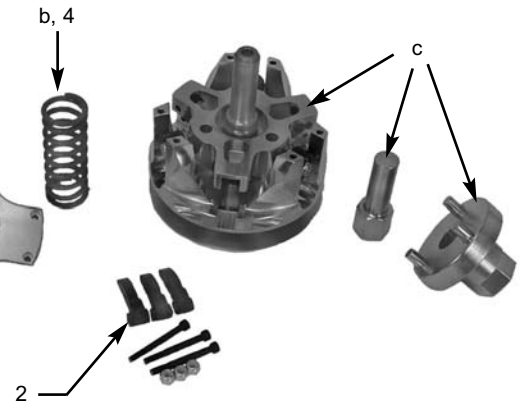


Figure 3

## Yearly Maintenance:

(to be done once a year)

1. Complete tear down and cleaning (see Race Cleaning, step 1)
2. Check flyweight bushings
3. Check roller bearing assemblies to be sure they are clean and able to spin freely
4. Replace spring
5. Re-assemble clutch



Figure 4

**Engineering performance parts for over a decade.**



**Order Line 1-800-557-5430 • Tech Line 1-970-336-5930 • [www.jracecar.com](http://www.jracecar.com)**