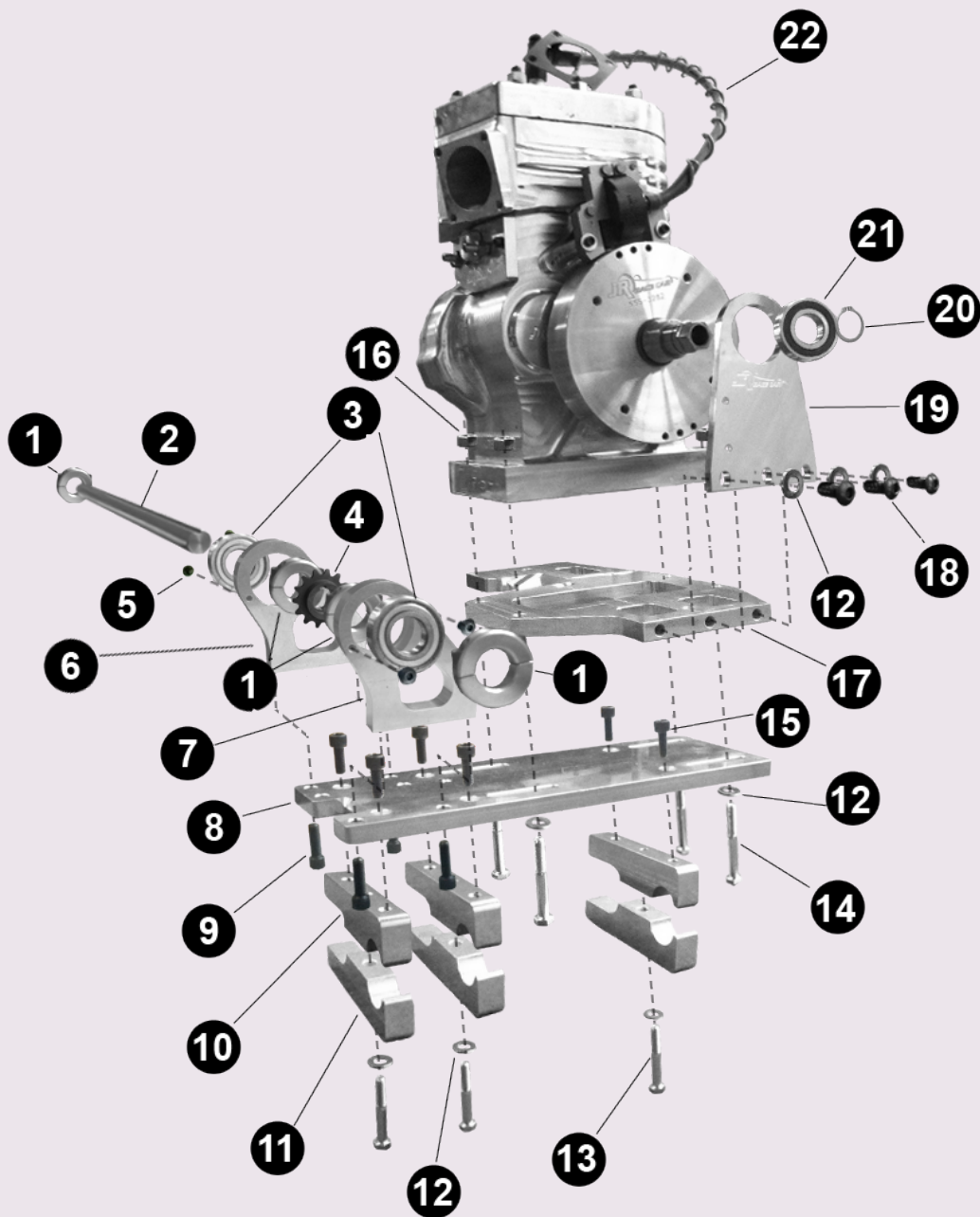


CENTER-PULL MOTOR PLATE ASSEMBLY

Reference Sheet for Assembly and Component Part List





Technical Support

256-2505 Shockwave O/D Plate Assembly

Item Number	Part Number	Description	Qty Included in Kit
1	555-3597	3/4" Lock Collar	4
2	555-6639	11" Jackshaft	1
3	541-5214	3/4" Bearings	2
4	243-2141	13 Tooth Sprocket	1
5	324-7021	10-32x1/4" Button Head Cap Screw	4
6	559-8905	LH Bearing Upright	1
7	559-8904	RH Bearing Upright	1
8	555-6602	Center Pull Plate	1
9	324-4030	5/16-18x1" Socket Head Cap Screw	4
10	555-6645	2-7/8" Top Motor Plate Clamp	3
11	555-6646	2-7/8" Bottom Motor Plate Clamp	3
12	324-5105	5/16" Hardened Washer	11
13	324-5012	5/16-18x2" Hex Head Bolt	3
14	324-5002	5/16-18x2-1/2" Hex Head Bolt	4
15	324-4030	5/16-18x3/4" Socket Head Cap Screw	6
16	324-8100	5/16-18 Nut	4
not shown	324-5162	.062" x 3/4 Shim	2
not shown	324-2106	3/16 x 3/4" Key (Sprocket)	1
not shown	324-2108	3/16 x 2-1/2" Key	1
not shown	555-6670	1/4" Jackshaft Spacer	1
not shown	555-6671	1/2" Jackshaft Spacer	1
not shown	555-6674	1-1/4" Jackshaft Spacer	1

Items Shown for Assembly Purposes (Not Included in Kit)

17	555-6507-1	Dual Support Plate SW OD Pro
18	324-7046	5/16-18x7/8" Button Head Cap Screw
19	559-9001	Dual Support Upright Flywheel Side
20	324-2200	7/8" External Snap Ring
21	541-9210	Dual Support Bearing
22	ZRC-7000	ZR-4 3-1/2" (7.90) Racing Engine